



Loulé

Ref: M2367

Price: € 648.000

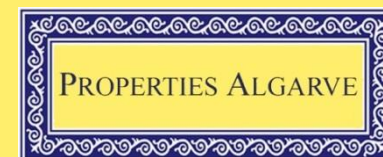
Charming refurbished farmhouse with separate annex on large plot of 7200 m2

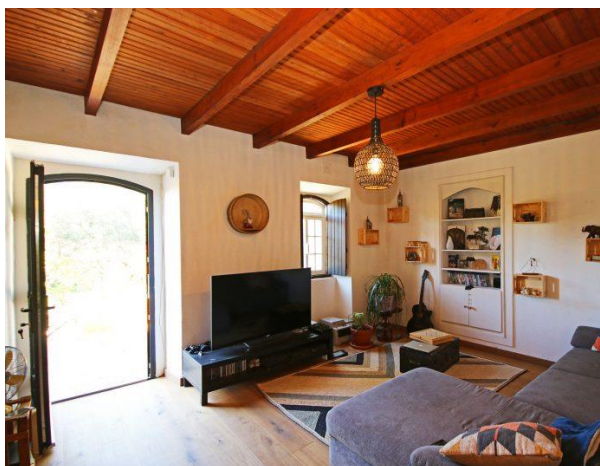
Specification

Lovely versatile refurbished farmhouse short drive to amenities with a large mature garden. Consists of 3 bedrooms, 2 bathrooms, living room with wooden ceiling, traditional details, spacious annex with large mezzanine currently in use as storage (can be transformed into more bedrooms), solar panels, mains water, lots of fruit trees, constructed in 1924 and refurbished in 2018. ER C

All particulars contained herein are for guidance only and do not form part of any contract

Ploeger Properties Soc. de Mediação Imobiliária Unipessoal Lda. (AMI 6754)
Caminho do Alecrim C.P. 360 Z, Goldra de Baixo
8005-487 Santa Bárbara de Nexe, Faro, Portugal
Tel.: (+351) 919 539 017 Email: infoppa@mail.telepac.pt
www.propertiesalgarveonline.com





Ploeger Properties Soc. de Mediação Imobiliária Unipessoal Lda. (AMI 6754)
 Caminho do Alecrim C.P. 360 Z, Goldra de Baixo
 8005-487 Santa Bárbara de Nexe, Faro, Portugal
 Tel.: (+351) 919 539 017 Email: infoppa@mail.telepac.pt
www.propertiesalgarveonline.com

